



Medical Policy

Policy Owner : East Ravendale Church of England Primary School

Policy Date : May 2024



This policy is written in line with the requirements of:-

Children and Families Act 2014 - section 100

Supporting pupils at school with medical conditions: statutory guidance for governing bodies of maintained schools and proprietors of academies in England, DfE Sept 2014

0-25 SEND Code of Practice, DfE 2014

Mental Health and behaviour in schools: departmental advice for school staff, DfE June 2014

Equalities Act 2010

Schools Admissions Code, DfE 1 Feb 2010

This policy should be read in conjunction with the following school policies
SEN Policy / SEN Information Report, Safeguarding Policy, Off-site visits policy,
Complaints Policy

Definitions of medical Conditions

Pupils' medical needs may be broadly summarised as being of two types:-

Short-term affecting their participation at school because they are on a course of medication or have had a significant injury e.g. a broken limb.

Long-term potentially limiting access to education and requiring on-going support, medicines or care while at school to help them to manage their condition and keep them well, including monitoring and intervention in emergency circumstances. It is important that parents feel confident that the school will provide effective support for their child's medical condition and that pupils feel safe.

Some children with medical conditions may be considered disabled. Where this is the case governing bodies **must** comply with their duties under the Equality Act 2010. Some may also have special educational needs (SEN) and may have a statement or Education, Health and Care Plan (EHCP). Where this is the case this policy should be read in conjunction with the 0-25 SEND Code of Practice and the school's SEND policy / SEND Information Report and the individual healthcare plan will become part of the EHCP.



The statutory duty of the Academy Committee

The Academy Committee remains legally responsible and accountable for fulfilling their statutory duty for supporting pupils at school with medical conditions. The Academy Committee of East Ravendale CofE Primary fulfil this by:-

- Ensuring that arrangements are in place to support pupils with medical conditions. In doing so we will ensure that such children can access and enjoy the same opportunities at school as any other child;
- Taking into account that many medical conditions that require support at school will affect quality of life and may be life-threatening. Some will be more obvious than others and therefore the focus is on the needs of each individual child and how their medical condition impacts on their school life;
- Ensuring that the arrangements give parents and pupils confidence in the school's ability to provide effective support for medical conditions, showing an understanding of how medical conditions impact on a child's ability to learn, as well as increase their confidence and promote self-care. We will ensure that staff are properly trained to provide the support that pupils need;
- Ensuring that no child with a medical condition is denied admission or prevented from taking up a place in school because arrangements for their medical condition have not been made. However, in line with safeguarding duties, we will ensure that pupils' health is not put at unnecessary risk from, for example, infectious diseases, and reserve the right to refuse admittance to a child at times where it would be detrimental to the health of that child or others to do so;
- Ensuring that the arrangements put in place are sufficient to meet our statutory duties and ensure that policies, plans, procedures and systems are properly and effectively implemented;
- Developing a policy for supporting pupils with medical conditions that are reviewed regularly and accessible to parents and school staff (this policy);



- Ensuring that the policy includes details on how the policy will be implemented effectively, including a named person who has overall responsibility for policy implementation (see section below on policy implementation);
- Ensuring that the policy sets out the procedures to be followed whenever the school is notified that a pupil has a medical condition (see section below on procedure to be followed when notifications is received that a pupil has a medical condition);
- Ensuring that the policy covers the role of individual healthcare plans, and who is responsible for their development, in supporting pupils at school with medical conditions (see section below on individual healthcare plans);
- Ensuring that the school policy clearly identifies the roles and responsibilities of all those involved in arrangements for supporting pupils at school with medical conditions and how they will be supported, how their training needs will be assessed and how and by whom training will be commissioned and provided (see section below on staff training and support);
- Ensuring that the school policy covers arrangements for children who are competent to manage their own health needs and medicines (see section below on the child's role in managing their own medical needs);
- Ensuring that the policy is clear about the procedures to be followed for managing medicines including the completion of written records (see section below on managing medicines on school premises);
- Ensuring that the policy sets out what should happen in an emergency situation (see section below on emergency procedures);
- Ensuring that the arrangements are clear and unambiguous about the need to actively support pupils with medical conditions to participate in school trips and visits, or in sporting activities, and not prevent them from doing so (see section on day trips, residential trips and sporting activities);
- Ensuring that the policy is explicit about what practice is not acceptable (see section on unacceptable practice);



- Ensuring that the appropriate level of insurance is in place and appropriate to the level of risk (see section on Liability and Indemnity);
- Ensuring that the policy sets out how complaints may be made and will be handled concerning the support to pupils with medical conditions (see section on complaints).

Policy implementation

The statutory duty for making arrangements for supporting pupils at school with medical conditions rests with the Academy Committee. The Academy Committee have conferred the following functions of the implementation of this policy to the staff below, however, the Academy Committee remains legally responsible and accountable for fulfilling our statutory duty.

The overall responsibility for the implementation of this policy is given to Ann-Marie Wilson, Executive Head Teacher. She will also be responsible for ensuring that sufficient staff are suitably trained and will ensure cover arrangements in cases of staff absences or staff turnover to ensure that someone is always available and on-site with an appropriate level of training. She will be responsible for briefing supply teachers, preparing risk assessments for school visits and other school activities outside of the normal timetable and for the monitoring of individual healthcare plans. In her absence Rebecca Farr, Head of School, will step up.

Rebecca Farr, SENDCO, will be responsible in conjunction with parents/carers, for drawing up, implementing and keeping under review the individual healthcare plan for each pupil and making sure relevant staff are aware of these plans.

All members of staff are expected to show a commitment and awareness of children's medical conditions and the expectations of this policy. All new members of staff will be inducted into the arrangements and guidelines in this policy upon taking up their post.

Procedure to be followed when notification is received that a pupil has a medical condition

This covers notification prior to admission, procedures to cover transitional arrangements between schools or alternative providers, and the process to be followed upon reintegration after a period of absence or when pupils' needs change. For children being admitted to East Ravendale CofE Primary School for the first time with good notification given, the arrangements will be in place for the start of the



relevant school term. In other cases, such as a new diagnosis or a child moving to the school mid-term, we will make every effort to ensure that arrangements are put in place within two weeks.

In making the arrangements, we will take into account that many of the medical conditions that require support at school will affect quality of life and may be life-threatening. We also acknowledge that some may be more obvious than others. We will therefore ensure that the focus is on the needs of each individual child and how their medical condition impacts on their school life. We aim to ensure that parents/carers and pupils can have confidence in our ability to provide effective support for medical conditions in school, so the arrangements will show an understanding of how medical conditions impact on the child's ability to learn, as well as increase their confidence and promote self-care.

We will ensure that staff are properly trained and supervised to support pupils' medical conditions and will be clear and unambiguous about the need to support actively pupils with medical conditions to participate in school trips and visits, or in sporting activities, and not prevent them from doing so. We will make arrangements for the inclusion of pupils in such activities with any adjustments as required unless evidence from a clinician such as a GP states that this is not possible. We will make sure that no child with a medical condition is denied admission or prevented from attending the school because arrangements for supporting their medical condition have not been made. However, in line with our safeguarding duties, we will ensure that all pupils' health is not put at unnecessary risk from, for example infectious disease. We will therefore not accept a child in school at times where it would be detrimental to the health of that child or others.

East Ravendale CofE Primary School does not have to wait for a formal diagnosis before providing support to pupils. In cases where a pupil's medical condition is unclear, or where there is a difference of opinion, judgements will be needed about what support to provide based on available evidence. This would normally involve some form of medical evidence and consultation with parents/carers. Where evidence conflicts, some degree of challenge may be necessary to ensure that the right support can be put in place. These discussions will be led by Ann-Marie Wilson, and following these discussions an individual healthcare plan will be written in conjunction with the parent/carers by Rebecca Farr, and be put in place.

Individual healthcare plans



Individual healthcare plans will help to ensure that East Ravendale CofE Primary School effectively supports pupils with medical conditions. They will provide clarity about what needs to be done, when and by whom. They will often be essential, such as in cases where conditions fluctuate or where there is a high risk that emergency intervention will be needed. They are likely to be helpful in the majority of other cases too, especially where medical conditions are long-term and complex. However, not all children will require one. The school, healthcare professional and parent/carer should agree, based on evidence, when a healthcare plan would be inappropriate or disproportionate. If consensus cannot be reached the Head teacher, Ann-Marie Wilson, is best placed to take a final view. A flow chart for identifying and agreeing the support a child needs and developing an individual healthcare plan is provided at annex A.

Individual healthcare plans will be easily accessible to all who need to refer to them, while preserving confidentiality. Plans will capture the key information and actions that are required to support the child effectively. The level of detail within the plan will depend on the complexity of the child's condition and the degree of support needed. This is important because different children with the same health condition may require very different support. Where a child has SEND but does not have an EHC plan, their special educational needs should be mentioned in their individual healthcare plan.

Individual healthcare plans (and their review) should be drawn up in partnership between the school, parents/carers and a relevant healthcare professional eg school, specialist or children's community nurse, who can best advise on the particular needs of the child. Pupils should also be involved whenever appropriate. The aim should be to capture the steps which East Ravendale CofE Primary School should take to help manage their condition and overcome any potential barriers to getting the most from their education. Partners should agree who will take the lead in writing the plan, but responsibility for ensuring it is finalised and implemented rests with the school.

East Ravendale CofE Primary School will ensure that individual healthcare plans are reviewed at least annually or earlier if evidence is presented that the child's needs have changed. They will be developed and reviewed with the child's best interests in mind and ensure that East Ravendale CofE Primary School assesses and manages risks to the child's education, health and social wellbeing, and minimises disruption. Where a child is returning to school following a period of hospital education or alternative provision, we will work with the local authority and education provider to



ensure that the individual healthcare plan identifies the support the child will need to reintegrate effectively.

Appendix 1 provides a basic template for the individual healthcare plan, and although this format may be varied to suit the specific needs of each pupil, they should all include the following information:

- The medical condition, its triggers, signs, symptoms and treatments;
- The pupil's resulting needs, including medication (dose, side effects and storage) and other treatments, time, facilities, equipment, testing, access to food and drink where this is used to manage their condition, dietary requirements and environmental issues eg crowded corridors, travel time between lessons;
- Specific support for the pupil's educational, social and emotional needs - for example, how absences will be managed, requirements for extra time to complete exams, use of rest periods or additional support in catching up with lessons, counselling sessions;
- The level of support needed (some children will be able to take responsibility for their own health needs) including in emergencies. If a child is self-managing their medication, this should be clearly stated with appropriate arrangements for monitoring;
- Who will provide this support, their training needs, expectations of their role and confirmation of proficiency to provide support for the child's medical condition from a healthcare professional; and cover arrangements for when they are unavailable;
- Who in the school needs to be aware of the child's condition and the support required;
- Arrangements for written permission from parents/carers and the Executive Headteacher, Ann-Marie Wilson, for medication to be administered by a member of staff, or self-administered by the pupil during school hours;
- Separate arrangements or procedures required for school trips or other school activities outside of the normal school timetable that will ensure the child can participate eg, risk assessment;



- Where confidentiality issues are raised by the parent/carer or child, the designated individual to be entrusted with information about the child's condition; and
- What to do in an emergency, including whom to contact, and contingency arrangements. Some children may have an emergency healthcare plan prepared by their lead clinician that could be used to inform development of their individual healthcare plan

Roles and responsibilities

Please refer to the section on policy implementation for the functions that have been delegated to different, named members of staff at East Ravendale CofE Primary School.

In addition, we can refer to the **School Nursing Team** for support with drawing up Individual Healthcare Plans, provide or commission specialist medical training, liaison with lead clinicians and advice or support in relation to pupils with medical conditions.

Other **healthcare professionals, including GPs and paediatricians** should notify the School Nursing Team when a child has been identified as having a medical condition that will require support at school. Specialist local health teams may be able to provide support, and training to staff, for children with particular conditions (eg asthma, diabetes, epilepsy)

Pupils with medical conditions will often be best placed to provide information about how their condition affects them. They should be fully involved in discussions about their medical support needs and contribute as much as possible to the development of, and comply with, their individual healthcare plan. Other pupils will often be sensitive to the needs of those with medical conditions, and can, for example, alert staff to the deteriorating condition or emergency need of pupils with medical conditions.

Parents/carers should provide the school with sufficient and up-to-date information about their child's medical needs. They may in some cases be the first to notify the school that their child has a medical condition. Parents are key partners and should be involved in the development and review of their child's individual healthcare plan, and may be involved in its drafting. They should carry out any action they have



agreed to as part of its implementation, eg provide medicines and equipment and ensure they or another nominated adult are contactable at all times.

Local authorities are commissioners of school nurses for maintained schools and trust schools and academies.

Providers of health services should co-operate with schools that are supporting children with medical conditions. They can provide valuable support, information, advice and guidance to schools, and their staff, to support children with medical conditions at school.

Clinical commissioning groups (CCGs) commission other healthcare professionals such as specialist nurses. They have a reciprocal duty to co-operate under Section 10 of the Children Act 2004 (as described above for local authorities). The local Health and Well-being Board provides a forum for the local authority and CCGs to consider with other partners, including locally elected representatives, how to strengthen links between education, health and care settings.

The **Ofsted** inspection framework places a clear emphasis on meeting the needs of disabled children and pupils with SEND and considering the quality of teaching and the progress made by these pupils. Inspectors are already briefed to consider the needs of pupils with chronic or long-term medical conditions alongside these groups and to report on how well their needs are being met. Schools are expected to have a policy dealing with medical needs and to be able to demonstrate that it is being implemented effectively.

Staff training and support

Names of Current First Aiders are displayed throughout the school.

The following staff have received general training

Paediatric First Aiders:

Amanda Meikle, Joanne Simpson, Hannah Riley, Mike Kaynes and Rebecca Farr

Named people for administering medicines:

Names as above

Appendix 5 will be used to record staff training for administration of medicines and /or medical procedures.



All staff who are required to provide support to pupils for medical conditions will be trained by healthcare professional qualified to do so. The training need will be identified by the healthcare professional during the development or review of the individual healthcare plan. We may choose to arrange training ourselves and will ensure that it remains up-to-date.

Training should be sufficient to ensure that staff are competent and have confidence in their ability to support pupils with medical conditions, and to fulfil the requirements set out in the individual healthcare plans. They will need an understanding of the specific medical conditions they are being asked to deal with, their implications and preventative measures.

Staff must not give prescription medicines or undertake healthcare procedures without appropriate training (updated to reflect any individual healthcare plans). A first aid certificate does not constitute appropriate training in supporting children with medical conditions. Healthcare professionals, including the school nurse, can provide confirmation of proficiency of staff in a medical procedure, or in providing medication (see appendix).

All staff will receive induction training and regular whole school awareness training so that all staff are aware of the school's policy for supporting pupils with medical conditions and their role in implementing the policy. Ann-Marie Wilson, Executive Headteacher, will seek advice from relevant healthcare professions about training needs, including preventative and emergency measures so that staff can recognise and act quickly when a problem occurs.

The family of a child will often be key in providing relevant information to school staff about how their child's needs can be met, and parents will be asked for their views. They should provide specific advice, but should not be the sole trainer.

The child's role in managing their own medical needs

If, after discussion with the parent/carer, it is agreed that the child is competent to manage his/her own medication and procedures, s/he will be encouraged to do so. This will be reflected in the individual healthcare plan.

Wherever possible children will be allowed to carry their own medicines and relevant devices or should be able to access their medication for self-medication quickly and easily; these will be stored in the medical fridge in the staff room to ensure that the



safeguarding of other children is not compromised. East Ravendale CofE Primary School also recognises that children who take their medicines themselves and/or manage procedures may require an appropriate level of supervision. If it is not appropriate for a child to self-manage, then relevant staff will help to administer medicines and manage procedures for them.

If a child refuses to take medicine or carry out a necessary procedure, staff should not force them to do so, but follow the procedure agreed in the individual healthcare plan. Parents will be informed so that alternative options can be considered.

Managing medicines on school premises and record keeping

At East Ravendale CofE Primary the following procedures are to be used:

- Medicines should only be administered at school when it would be detrimental to a child's health or school attendance not to do so;
- No child under 16 should be given prescription or non-prescription medicines without their parents written consent (see Appendix 2) - except in exceptional circumstances where the medicine has been prescribed to the child without the knowledge of the parents. In such cases, every effort should be made to encourage the child or young person to involve their parents while respecting their right to confidentiality;
- With parental written consent we will administer non-prescription medicines (except never aspirin or containing aspirin except prescribed by a doctor). Medication, eg for pain relief, should never be administered without first checking maximum dosage and when previous dose was taken. Parents should be informed;
- Where clinically possible, medicines should be prescribed in dose frequencies which enable them to be taken outside school hours. We encourage parents whose child is taking medication three times a day to give it before school, after school and at bedtime.
- East Ravendale CofE Primary School will only accept prescribed medicines, with written permission from parent/carer that are in-date, labelled, provided in the original container as dispense a pharmacist and include instructions for administration, dosage and storage. The exception



to this is insulin which must be in-date, but will generally be available to schools inside an insulin pen or a pump, rather than its original container;

- All medicines will be stored safely in the medicine cabinet. Children should know who holds the key to the cabinet.
- Medicines and devices such as asthma inhalers, blood glucose testing meters and adrenaline pens should be always readily available and not locked away. Asthma inhalers should be marked with the child's name.
- During school trips the first aid trained member of staff will carry all medical devices and medicines required;
- A child who had been prescribed a controlled drug may legally have it in their possession if they are competent to do so, but passing it to another child for use is an offence. Monitoring arrangements may be necessary. Otherwise we will keep all controlled drugs that have been prescribed for a pupil securely stored in a non-portable container and only named staff will have access. Controlled drugs should be easily accessible in an emergency. A record should be kept of any doses used and the amount of the controlled drug held in the school;
- Staff administering medicines should do so in accordance with the prescriber's instructions. East Ravendale CofE Primary School will keep a record (see Appendix 3 and 4) of all medicines administered to individual children, stating what, how and how much was administered, when and by whom. Any side effects of the medication to be administered at school should be noted. Written records are kept of all medicines administered to children. These records offer protection to staff and children and provide evidence that agreed procedures have been followed;
- When no longer required, medicines should be returned to the parent/carer to arrange safe disposal. Sharps boxes should always be used for the disposal of needles and other sharps.

Emergency procedures

Ann-Marie Wilson, Executive Headteacher, will ensure that arrangements are in place for dealing with emergencies for all school activities wherever they take place,



including school trips within and outside the UK, as part of the general risk management process.

Where a child has an individual healthcare plan, this should clearly define what constitutes an emergency and explain what to do, including ensuring that all relevant staff are aware of emergency symptoms and procedures. Other pupils in the school should know what to do in general terms, such as informing a teacher immediately if they think help is needed.

If a child needs to be taken to hospital, staff should stay with the child until the parent arrives, or accompany a child taken to hospital by ambulance. Schools need to ensure they understand the local emergency services cover arrangements and that the correct information is provided for navigation systems.

Day trips, residential visits, and sporting activities

We will actively support pupils with medical conditions to participate in day trips, residential visits and sporting activities by being flexible and making reasonable adjustments unless there is evidence from a clinician such as a GP that this is not possible.

We will always conduct a risk assessment so that planning arrangements take account of any steps needed to ensure that pupils with medical conditions can be included safely. This will involve consultation with parents/carers and relevant healthcare professions and will be informed by Health and Safety Executive (HSE) guidance on school trips.

Other issues for consideration

Where a pupil uses home-to-school transport arranged by the LA and they also have a medical condition which is life-threatening, we will share the pupil's individual healthcare plan with the local authority.

Unacceptable practice

Although staff at East Ravendale CofE Primary should use their discretion and judge each case on its merit with reference to the child's individual healthcare plan, it is not generally acceptable practice to:

- Prevent children from easily accessing their inhalers and medication and administering their medication when and where necessary;



- Assume that every child with the same condition requires the same treatment;
- Ignore the views of the child or their parents\carers; or ignore medical evidence or opinion (although this may be challenged);
- Send children with medical conditions home frequently or prevent them from staying for normal school activities, including lunch, unless this is specified in their individual healthcare plans;
- If the child becomes ill, send them to the school office or private space unaccompanied or with someone unsuitable;
- Penalise children for their attendance record if their absences are related to their medical condition, eg hospital appointments;
- Prevent pupils from drinking, eating or taking toilet breaks whenever they need to in order to manage their medical condition effectively;
- Require parents\carers, or otherwise make them feel obliged, to attend school to administer medication or provide medical support to their child, including with toileting issues. No parent should have to give up working because the school is failing to support their child's medical needs; or
- Prevent children from participating, or creating unnecessary barriers to children participating in any aspect of school life, including school trips, eg by requiring parents to accompany the child.

Standard Practice

Where medicines are to be administered at school, it is important that a written instruction should have been received from the parent or doctor, specifying:

1. Name and class of the child
2. Medication Involved
3. Circumstances in which medication should be administered



4. Frequency and level of dosage

The school will not accept any medicine that has been taken out of the original container as originally dispensed by a pharmacist.

For more serious or chronic conditions, including allergies that require the potential use of an EpiPen, we require a care plan from a child's doctor/nurse stating exactly what needs to be given and when. (Appendix 2) This is usually requested via the school nurse service.

Training: Teachers and Support Staff should receive appropriate training and guidance via the School Health Service for non-routine administrations. (School Nurse Team Contact Number 01472 323660/ 07718200118)

Medicine Storage

It is the responsibility of the Executive Headteacher to ensure safe storage of materials.

All medicines should be kept in the container supplied which should be clearly labelled with the child's name, another identifier (such as date of birth) and instruction for usage. Refrigerated medicine to be stored in the staff room fridge. Children with medical conditions should have access to their emergency medication.

Medicine Disposal

Parents are asked to collect out-of-date medication. If this does not occur, medication should be taken to a pharmacy for disposal.

A named member of staff (Mrs Meikle) is responsible for checking dates of medication and arranging disposal if any have expired. This check should occur at least three times a year and be documented.

Sharps boxes are used to dispose of needles. These can be obtained on prescription. They should be stored in a locked cupboard. Collection of sharps boxes is arranged with the local authority's environmental services.

Impaired Mobility

Providing the GP or hospital consultant has given approval, children can attend school with plaster casts or crutches. There will be obvious restrictions on games and on some practical work to protect the child (or others). This includes outside play. Some relaxation of normal routine in relation to times of attendance or



movement around the school may need to be made in the interests of safety. A disclaimer would be signed by parent. (Appendix 6) and a Risk Assessment signed by staff.

Off-Site Visits

A First Aid Kit to be taken whenever children are taken off-site. Buckets and Towels, in case of sickness on a journey, are also sensible precautions.

All staff attending off-site visits are aware of any pupils with medical conditions on the visit. They should receive information about the type of condition, what to do in an emergency and any other additional medication or equipment necessary.

Employee's medicines

Staff and other employees may need to bring their own medicine into school. They have clear personal responsibility to ensure that their medication is not accessible to children. If the item must be refrigerated it may be left in the refrigerator located in the staff room.

Staff Protection

“Universal precautions” and common sense hygiene precautions will minimise the risk of infection when contact with blood or other bodily fluids is unavoidable.

- Always wear gloves.
- Wash your hands before and after administering first aid and medicines.
- Use the hand gel provided.

Staff Indemnity

The LAAT indemnifies its staff against claims for alleged negligence providing they are acting within the scope of their employment. The administration of medicines falls within this definition so staff can be reassured about the protection their employer provides. The indemnity would cover consequences that might arise where an incorrect dose is inadvertently given or where administration is overlooked. It also covers the administration of emergency medication when given according to an individual child's protocol. In practice, indemnity means that the school and not the individual employee will meet any costs of damages arising should a claim for negligence be successful. In practice, it is very rare for school staff to be sued for negligence and any action is usually between the parent and employer.



Prescribed Medicines

Antibiotics

A child taking antibiotics can recover quickly and be well enough to attend school, but it is essential that the full prescribed course of treatment is completed to prevent relapse, possible complications and bacterial resistance.

Inhalers

A child with asthma may have inhaler(s) which may need to be used regularly or before exercise, or when the child becomes wheezy. Most commonly, blue salbutamol inhalers (“relievers”) are used to relieve symptoms and brown steroid inhalers (“preventers”) are used to prevent exacerbations and control the severity of the illness.

Many of the relevant medical charities have developed resources to support school looking after children with chronic medical problems.

Asthma UK http://www.asthma.org.uk/media/95603/School%20Policy_16pp.pdf

Cystic Fibrosis Trust <http://www.cftrust.org.uk/>

Diabetes UK <http://www.diabetes.org.uk/information-for-parents/Living-with-diabetes-new/School/>

Epilepsy Action <http://www.epilepsy.org.uk/info/education>

The Anaphylaxis Campaign <http://www.anaphylaxis.org.uk/schools/help-for-schools>

Conditions requiring emergency action

As a matter of routine, all schools must have a clear procedure for summoning an ambulance in an emergency. (Appendix 7)

Some life-threatening conditions may require immediate treatment and some staff may volunteer to stand-by to administer these medicines in an emergency.

1. **Anaphylaxis** (acute allergic reaction)

A very small number of people are particularly sensitive to particular substances eg bee sting, nuts and may require an immediate injection of adrenaline. This is potentially life-saving.

2. **Major Fit**



Some epileptic children require rectal diazepam if they have a prolonged fit that does not spontaneously stop. A second member of staff must be present during the administration.

3. Diabetic hypoglycaemia

Blood sugar control can be difficult in diabetics, and blood sugar levels may drop to a very low level causing a child to become confused, aggressive or even unconscious. If the child does not respond to the dextrose tablets they carry, or to other foods/drinks containing sugar, Hypostop (a sugar containing gel rubbed into the gums) or an injection of Glucagon may be required.

When there is a concern regarding an adult or child who has had an accident or become ill, a trained First Aider should check the patient before taking further action.

If it is not an emergency and in the case of a child, parent/carers should be contacted and asked to take the child to the GP or A&E if they think fit. Where it involves a member of staff, they should receive support from another adult.

Where it is deemed an emergency, a First Aider will inform a member of SLT that an ambulance is being called. Ambulance control will need as much information about the casualty as possible (Name, DOB, suspected injury/illness, level of consciousness, etc.) along with the school address and contact information. NB. If for any reason an SLT member is not in school, the first aider will consult/liaise with another First Aider/Senior Teacher and an ambulance will be called.

The child's parent/carer should be called immediately to accompany the casualty to hospital (or next of kin where a member of staff is involved). If a parent is unavailable immediately, then a member of staff needs to accompany the child in the first instance. Another member of staff should follow the ambulance by car to support the first member of staff and bring them back to school once parents or other relatives have arrived in the hospital.

Names of Current First Aiders are displayed throughout the school.

Always wear gloves when administering First Aid.



First Aid book – entries must be clear, in ink, and include:

- Name of child and class
- Signature of the person reporting the accident
- Date and Time
- Where it occurred and what happened
- The resulting injury
- How it was dealt with.

Parents should be notified of any First Aid administered to a child during the day by a text home. Any serious injuries (other than non-serious bruises, grazes, etc) will require the parents to be contacted immediately.

Complaints

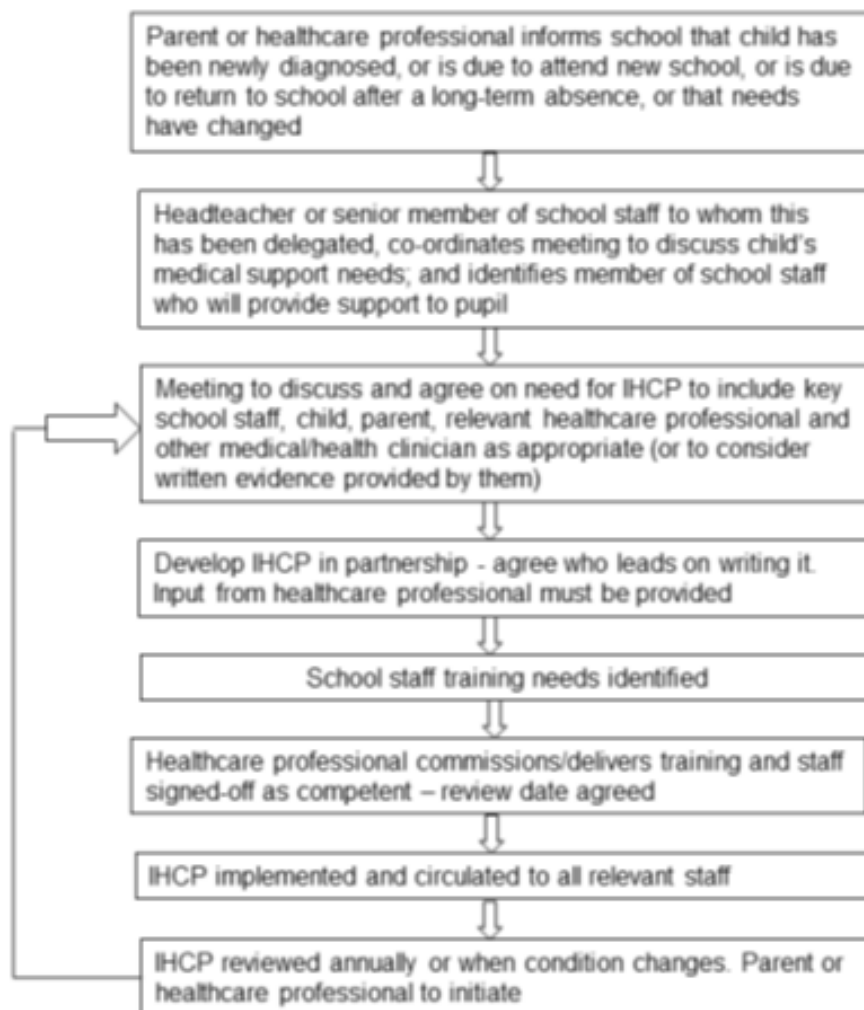
Should parents\carers be unhappy with any aspect of their child's care at East Ravendale CofE Primary, they must discuss their concerns with the school. This will be with the child's class teacher in the first instance, with whom any issues should be addressed. If this does not resolve the problem or allay the concern, the problem should be brought to attention of the Executive Headteacher. In the unlikely event of this not resolving the issue, the parent\carer must make a formal complaint using the East Ravendale CofE Primary Complaints Procedure.

Further sources of information

<https://www.gov.uk/government/publications/supporting-pupils-at-school-with-medical-conditions--3/supporting-pupils-with-medical-conditions-links-to-other-useful-resources--2>



Annex A: Model process for developing individual healthcare plans





Appendix 1: Individual Healthcare Plan

Name of school/setting

East Ravendale CofE Primary School

Child's name

Group/class/form

Date of birth

Child's address

Medical diagnosis or condition

Date

Review date

Family Contact Information

Name

Phone no. (work)

(home)

(mobile)

Name

Relationship to child

Phone no. (work)

(home)



(mobile)

Clinic/Hospital Contact

Name

Phone no.

G.P.

Name

Phone no.

Who is responsible for providing support in school

Describe medical needs and give details of child's symptoms, triggers, signs, treatments, facilities, equipment or devices, environmental issues etc

Name of medication, dose, method of administration, when to be taken, side effects, contra-indications, administered by/self-administered with/without supervision

Daily care requirements



Specific support for the pupil's educational, social and emotional needs

Arrangements for school visits/trips etc

Other information

Describe what constitutes an emergency, and the action to take if this occurs

Who is responsible in an emergency (*state if different for off-site activities*)

Plan developed with



Staff training needed/undertaken – who, what, when

Form copied to



Appendix 2: Parental agreement for School to administer medicine

The school/setting will not give your child medicine unless you complete and sign this form, and the school or setting has a policy that the staff can administer medicine.

Date for review to be initiated by

--

Name of school/setting

East Ravendale C of E Primary School

Name of child

--

Date of birth

--

Group/class/form

--

Medical condition or illness

--

Medicine

Name/type of medicine

(as described on the container)

--

Expiry date

--

Dosage and method

--

Timing

--

Special precautions/other instructions

--

Are there any side effects that the school/setting needs to know about?

--

Self-administration – y/n

--



Procedures to take in an emergency

NB: Medicines must be in the original container as dispensed by the pharmacy

Contact Details

Name

Daytime telephone no.

Relationship to child

Address

I understand that I must deliver the medicine personally to

The above information is, to the best of my knowledge, accurate at the time of writing and I give consent to school/setting staff administering medicine in accordance with the school/setting policy. I will inform the school/setting immediately, in writing, if there is any change in dosage or frequency of the medication or if the medicine is stopped.

Signature(s) _____

Date _____



Appendix 3: Record of medicine administered to an individual child

Name of school/setting	East Ravensdale C of E Primary School
Name of child	
Date medicine provided by parent	
Group/class/form	
Quantity received	
Name and strength of medicine	
Expiry date	
Quantity returned	
Dose and frequency of medicine	

Staff signature _____

Signature of parent _____

Date

--	--	--



Time given

Dose given

Name of member of staff

Staff initials

Date

Time given

Dose given

Name of member of staff

Staff initials

C: Record of medicine administered to an individual child (Continued)

Date

Time given

Dose given

Name of member of staff

Staff initials

Date

--	--	--



Time given

Dose given

Name of member of staff

Staff initials

Date

Time given

Dose given

Name of member of staff

Staff initials

Date

Time given

Dose given

Name of member of staff

Staff initials

East Ravensdale Church of England Primary School

Policies







Appendix 5: Staff training record – administration of medicines and/or medical procedures

Name of school/setting

East Ravendale Cof E Primary School

Name

Type of training received

Date of training completed

Training provided by

Profession and title

I confirm that [name of member of staff] has received the training detailed above and is competent to carry out any necessary treatment. I recommend that the training is updated [name of member of staff].

Trainer's signature _____

Date _____

I confirm that I have received the training detailed above.

Staff signature _____

Date _____

Suggested review date



Appendix 6:

East Ravensdale C of E Primary School Disclaimer Notice

Name of Child _____ Date of Birth _____

Address _____

Telephone Number _____

Nature of Illness/Injury _____

Whilst every effort is made to ensure your child stays in school at playtimes for their safety, we cannot accept responsibility should they choose to exit through a fire door outside to the playground.

I agree to the above conditions:-

Signed _____ Parent/Guardian

Date _____



Appendix 7:

East Ravendale C of E Primary School

Contacting Emergency Services

Request an ambulance - dial 999, ask for an ambulance and be ready with the information below.

Speak clearly and slowly and be ready to repeat information if asked.

1. your telephone number (School – 01425 825999)
2. your name
3. your location as follows [East Ravendale Primary School, East Ravendale, Grimsby]
4. state what the postcode is – please note that postcodes for satellite navigation systems may differ from the postal code (DN37 0RX)
5. provide the exact location of the patient within the school setting
6. provide the name of the child and a brief description of their symptoms
7. inform Ambulance Control of the best entrance to use and state that the crew will be met and taken to the patient
8. put a completed copy of this form by the phone